



Super Scan in Metastatic Extra Mammary Paget's Disease

Yuka Uema^{1,2} and Nao Kusutani^{2*}

¹Department of Dermatology, Kashiwara Municipal Hospital, Japan

²Department of Dermatology, Osaka City University Graduate School of Medicine, Japan

Keywords

Bone metastases; Extra mammary Paget's disease; Super scan

Clinical Image

An 87-year-old Japanese man presented with severe chest pain, lower back pain, anorexia, and malaise. He had a surgical history of Extra Mammary Paget's Disease (EMPD) of the penis and scrotum (Figure A). Fluorodeoxyglucose-Positron Emission Tomography/Computed Tomography (FDG-PET/CT) revealed multiple bone lesions with FDG uptake, including the vertebrae, bilateral ribs, scapulae, the sternum, the pelvis, and the right femur, the so called "super scan" (Figure B).

The super scan phenomenon is characterized by intense activity in the bones and diminished activity in the soft tissue and in renal parenchyma in bone scintigraphy; it is commonly observed in prostatic or breast cancer [1]. In this case, super scan on FDG-PET/CT was caused by EMPD, a cutaneous malignancy of apocrine sweat gland origin. EMPD commonly metastasizes to the regional lymph nodes, the liver, the lungs, and the bones, and the diagnosis of bone metastases was made with the help of FDG-PET/CT [2].

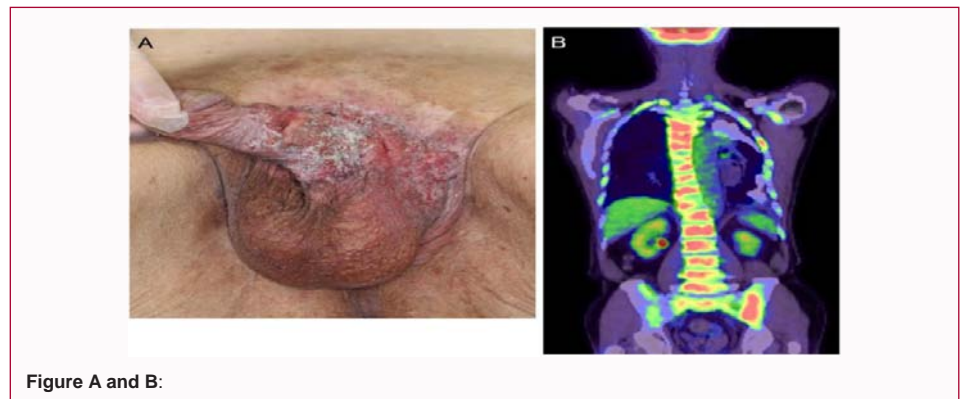


Figure A and B:

OPEN ACCESS

*Correspondence:

Nao Kusutani, Department of Dermatology, Osaka City University Graduate School of Medicine, Osaka, Japan,

E-mail: naokusu@med.osaka-cu.ac.jp

Received Date: 21 May 2018

Accepted Date: 06 Jun 2018

Published Date: 11 Jun 2018

Citation:

Uema Y, Kusutani N. Super Scan in Metastatic Extra Mammary Paget's Disease. *Clin Oncol.* 2018; 3: 1473.

Copyright © 2018 Nao Kusutani. This is an open access article distributed under the Creative Commons Attribution License, which permits unrestricted use, distribution, and reproduction in any medium, provided the original work is properly cited.

References

1. Osmond JD 3rd, Pendergrass HP, Potsaid MS. Accuracy of ^{99m}Tc-diphosphonate bone scans and roentgenograms in the detection of prostate, breast and lung carcinoma metastases. *Am J Roentgenol Radium Ther Nucl Med.* 1975;125(4):972-77.
2. Fukuda K, Funakoshi T. Metastatic Extra mammary Paget's disease: Pathogenesis and Novel Therapeutic Approach. *Front Oncol.* 2018;8:38.